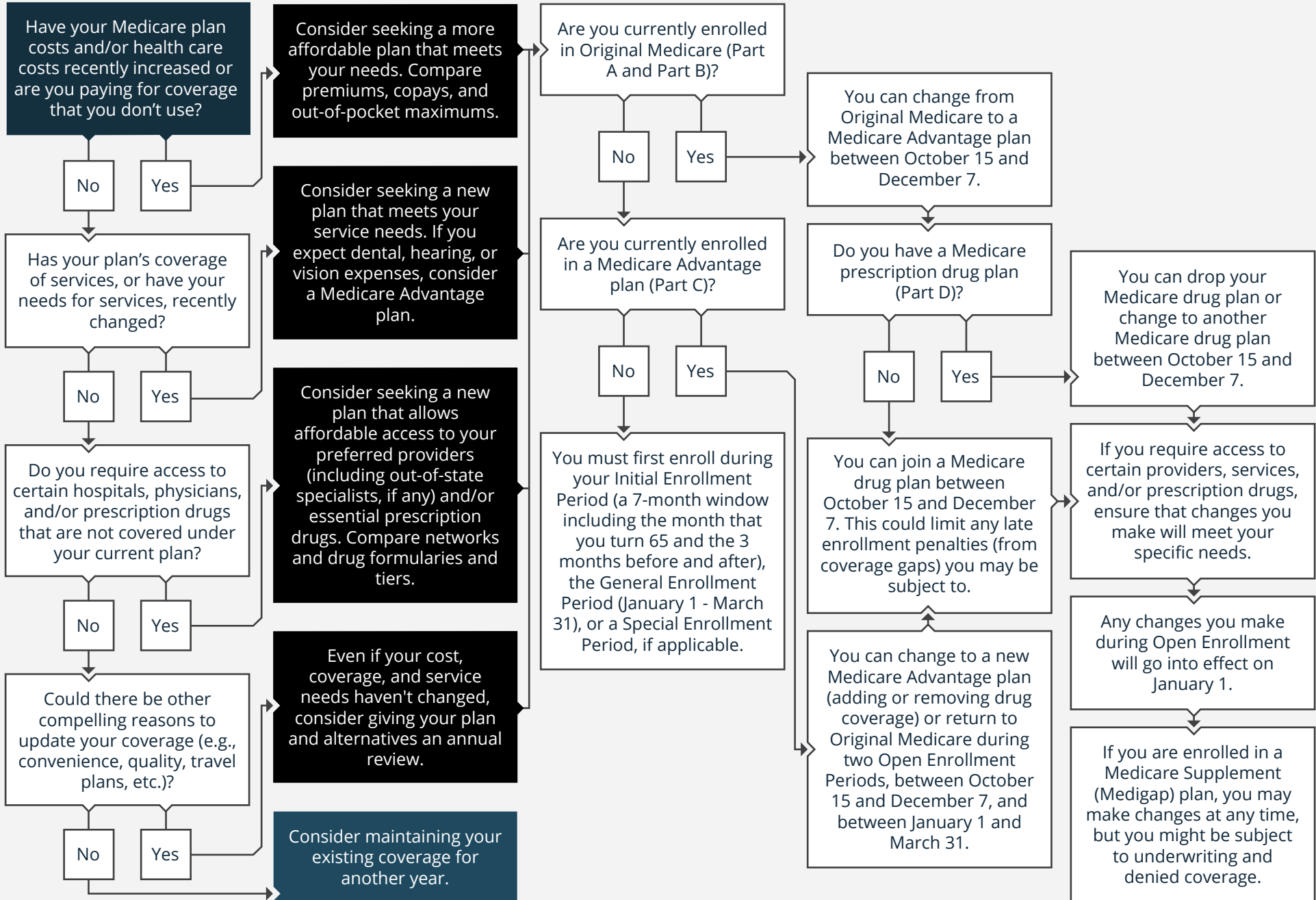


# 2021 · SHOULD I CHANGE MY MEDICARE COVERAGE DURING OPEN ENROLLMENT?

 **Start Here**



## Disclosures



This information is intended solely to report on investment strategies and opportunities identified by Roosevelt. Opinions and estimates offered constitute our judgment and are subject to change without notice, as are statements of financial market trends, which are based on current market conditions. This material is not intended as an offer or solicitation to buy, hold or sell any financial instrument. Please contact us at 646-452-6700 if there is any change in your financial situation, needs, goals or objectives, or if you wish to initiate any restrictions on the management of the account or modify existing restrictions, or if you would like to request a copy of our Code of Ethics. Our current disclosure statement is set forth in our Form ADV Part 2, available for your review upon request, also available is our Form CRS. You can find both on our website, [www.rooseveltinvestments.com](http://www.rooseveltinvestments.com).

### **Michael Miranda, Director of Marketing**

570 Lexington Avenue New York, NY 10022

[info@rooseveltinvestments.com](mailto:info@rooseveltinvestments.com) | 646-452-6700 | [www.rooseveltinvestments.com](http://www.rooseveltinvestments.com)